

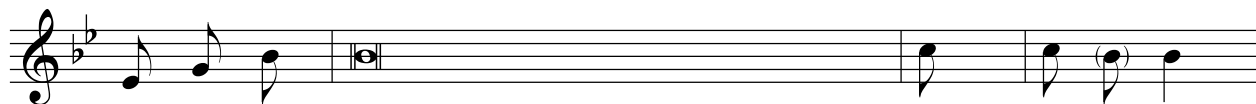
4th Sunday in Lent

Carlo Rossini

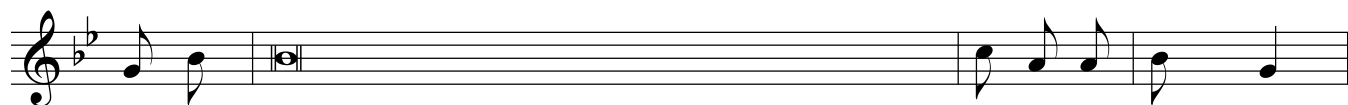
Introit

Arranged by Kyle Casey

Antiphon

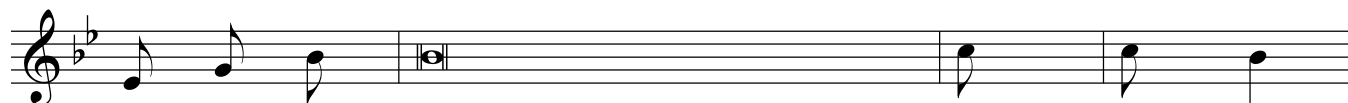


Lae - tá - re Jerúsalem: | et convén - - tum fá - ci - te
Gau - dé - te cum laetítia, | qui in tristítia fu - í - stis:

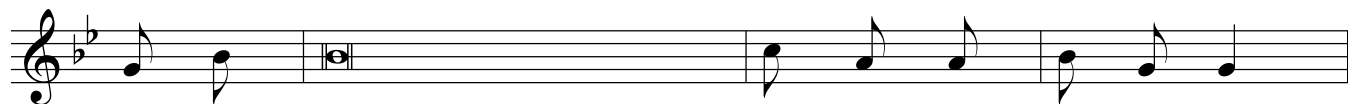


om - nes qui di - - lí - gi - tis e - am:
ut ex - sultétis, et satiémini | ab ubéribus consolati - - ó - nis ve - strae.

Psalm

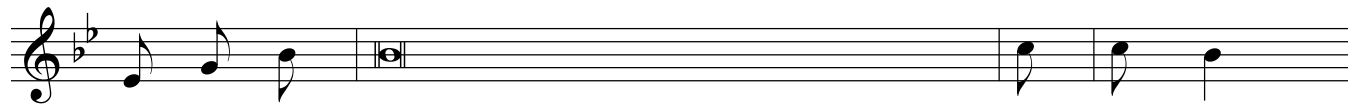


Lae - tá - tus sum in his quaedicta sunt mi - hi:

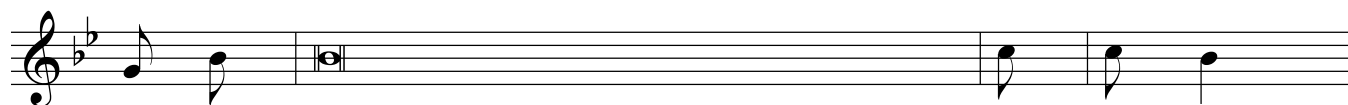


In do - mum Dó - mi - ni í - bi - mus.

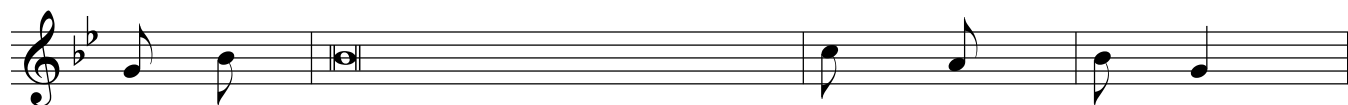
Gloria Patri



Gló - ri - a Patri, et, Fílio, | et Spirítu - - - i San - cto.



Sic - ut erat in principio, | et nunc, et sem - per,




et in saécula saecu - - - ló - rum. A - men.

to Antiphon

Gradual

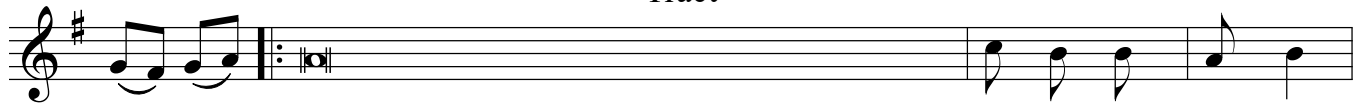


Lae - tá - tus sum in his quae di - cta sunt mi - hi:
Fiat pax in vir - tú - te tu - a:

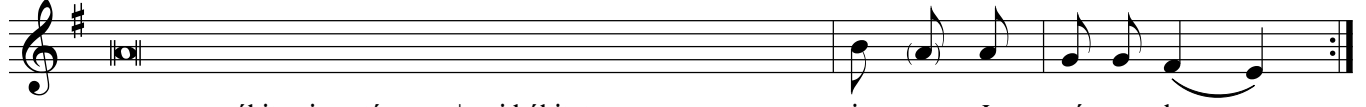


in domum Dó - mi - ni í - bi - mus. _____
et abundántia in túr - ri - bus tu - is. _____

Tract

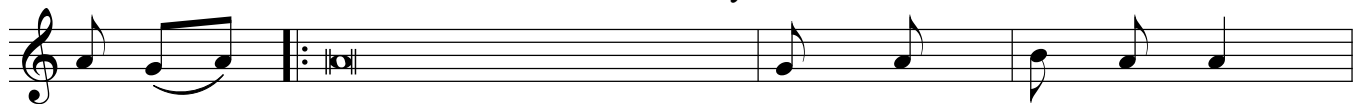


Qui - con - fidunt in Dómino, sic - ut mons Si - on:
Montes in circúitu ejus: | et Dóminus in circúitu pó - pu - li su - i,




non commovébitur in aetérnum, | qui hábitat in Je - rú - sa - lem. ____
ex hoc nunc et us - que in saé - cu - lum. ____

Offertory

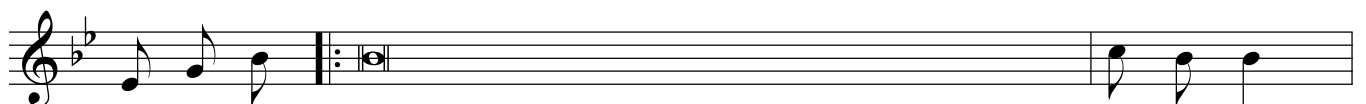


Lau - dá - te Dóminum, | qui a - be - ní - gnus est:
Omnia quae - cúm - que vó - lu - it,




psállite nómini ejus, | quó - ni - am su - á - vis est:
fecit in cae - lo et in ter - ra.

Communion



Je - rú - sa - lem, quae aedificátur ut cí - vi - tas,
Illuc enim ascenderunt tribus, | tribus Dó - mi - ni,



cújus participátio ejus in - id - í - psum.
ad confiténdum nómini tu - o, Dó - mi - ne.